

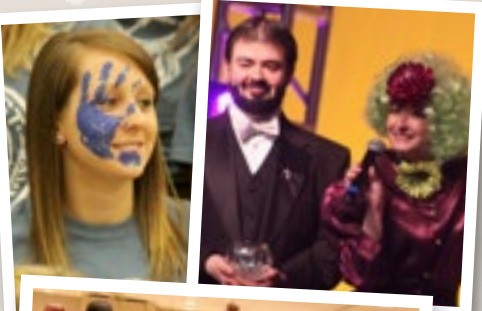
## Requirements to Join

In order to join any Greek organization, you must be a full-time undergraduate student at Frostburg State University. Each Greek-letter organization has a grade point average and credit hour requirements specific to its chapter, but the University requirements are 12 established credit hours and a 2.5 cumulative grade point average.

**Incoming freshmen are not allowed to join until Spring 2015**

## Exceptions to Minimum Grade Point Average

Delta Zeta            2.7 cumulative grade point average  
Phi Mu Delta        2.6 cumulative grade point average



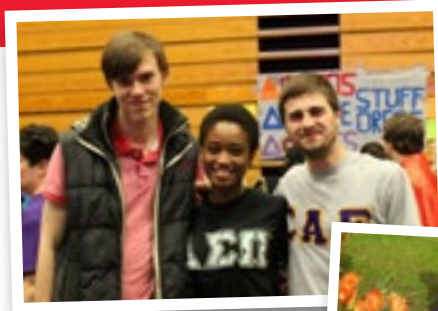
Top Left to Right: The Blue Team takes the trophy during Greek Week Hunger Games. Participating in the reaping for tributes.



Middle: Phi Beta Sigma participates in Iota Phi Theta's Party Walk.



Bottom: Greek Life donated \$4500 to the local animal shelter to support the no kill initiative.



Above: Greeks raised over \$10,000 for Relay for Life with Alpha Sigma Alpha being the top fundraising chapter.

Middle: Alpha Sigma Tau and Student Government Association President plant flowers.

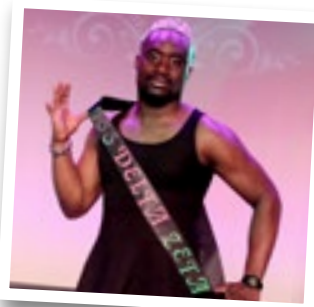
Left: Kappa Alpha Psi performs community service.

## Why Join?

At Frostburg State we have more than 10 great reasons to go Greek! Just take a look into each of our organizations and you will see that membership has its privileges:

- A supportive community in which to grow and learn
- Commitment to and support for academic achievement
- Develops self-confidence, social life and problem-solving skills
- Resumé assistance, job placement and marketing
- Involvement and experiential learning opportunities
- A national network of sisters, brothers and alumni
- Community service experiences on and off campus
- To be aware of and celebrate diversity
- Local and national leadership opportunities
- Lifetime commitment

Greek men perform in Delta Zeta's "Womanless Beauty Pageant" which supports charities against domestic violence.



Above: Sisters of Alpha Sigma Tau serve at Pine Mountain Settlement.



Right: Johnny Miller and Chris Albright, FSU Pi Lambda Phi alumni meet up in Afghanistan.

## Student & Community Involvement



### For more information:

**JAMIE WINTERS**  
ASST. DIRECTOR OF GREEK LIFE  
LANE UNIVERSITY CENTER, ROOM 209  
101 BRADDOCK ROAD  
FROSTBURG, MD 21532-2303  
PHONE: 301.687.7398 FAX: 301.687.7641  
EMAIL: [jwinters@frostburg.edu](mailto:jwinters@frostburg.edu)

[involvement.frostburg.edu](http://involvement.frostburg.edu)

"Like" us at Frostburg State University Greek Life

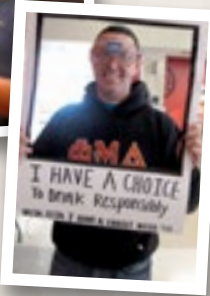
Tweet us at @FrostburgGreeks

Frostburg State University is an Affirmative Action/Equal Opportunity Institution. Admission shall be determined without regard to race, color, religion, sex, national origin, age or handicap.

FSU is committed to making all of its programs, services and activities accessible to persons with disabilities. To request accommodation through the ADA Compliance Office, call 301.687.4102 or use a Voice Relay Operator at 1.800.735.2258. Frostburg State University is a smoke-free campus.



# Greek Life



Above: Greek Chapter of the Year Sigma Alpha Iota presents a comedy skit. Right: Phi Mu Delta participates in "I Have a Choice" program.

## Frequently Asked Questions

### • Will my academics be compromised by joining a Greek organization?

On the contrary, a central mission of all Greek organizations is academic excellence. Fraternities and sororities understand that their members are students first and foremost. All chapters have scholarship programs that may include required study hours, tutoring, scholarships, and other recognitions for academic success. At this time, the all-Greek grade point average is higher than the FSU undergraduate average. Being a member of a Greek organization has the same workload as a 3-credit class.

### • How does joining a Greek-letter organization benefit me?

The chance to be a leader is not only available but expected. Chapters have leadership positions, financial responsibilities and policies and procedures to follow much like companies. Leadership and skill set training and the chapter, regional and national levels are always offered. Scholarships and mentorships are also available. Fraternities and sororities hold in high regard their responsibility to give back to the community whether donating time, working with others or raising money for a worthy cause. In the end, you have a chance to share a common experience and life-long membership. As such, each national organization has an extensive alumni network. In today's job market, whom you know can be just as important as what you know. Being a fraternity or sorority member means having an immediate connection with thousands of other members for life.

### • Is hazing considered a tradition among FSU fraternities and sororities?

Hazing has no place in any Greek organization. Frostburg State University will not tolerate hazing in any student organization. In addition, hazing is against the law in the state of Maryland. All fraternity and sorority members know that hazing is against their national policies, university policy and the law. All new members are required to take an anti-hazing class.

### • Does it cost a lot to be Greek?

Joining a fraternity or sorority does carry a financial commitment. Since each chapter is self-supporting, these fees support chapter management, national and regional conferences, educational and leadership programs, scholarships and insurance. When students join a Greek organization, they agree to and must pay dues and fees while enrolled at FSU to maintain membership. Greek membership is affordable, and some chapters are able to make accommodations for special circumstances, but students should discuss the financial obligations with the chapter and review their financial obligations before they join.

### • How do I get involved?

All students may contact the Greek Life office for chapter information, events and programs at [jjwinters@frostburg.edu](mailto:jjwinters@frostburg.edu) or go to [involvement.frostburg.edu/sci/student-activities/greek/](http://involvement.frostburg.edu/sci/student-activities/greek/)

### • How can I learn more about it?

Websites to take a closer look at:

- [www.nicindy.org](http://www.nicindy.org)
- [www.npcwomen.org](http://www.npcwomen.org)
- [www.nphchq.org](http://www.nphchq.org)

You are also encouraged to research national fraternities and sororities online at their official websites.

Right: Delta Zeta were part of 440 Greeks who served the Frostburg community during Beautify the 'Burg.



## Active Greek Organizations

### National Interfraternity Conference (NIC) Fraternities

Sigma Alpha Epsilon	Tau Kappa Epsilon
Phi Mu Delta	Pi Lambda Phi *
Kappa Delta Rho*	

### National Panhellenic Conference (NPC) Sororities

Alpha Sigma Tau  
Delta Zeta  
Alpha Sigma Alpha

### National Pan-Hellenic Conference (NPHC)

Alpha Phi Alpha	Iota Phi Theta
Phi Beta Sigma	Kappa Alpha Psi
Omega Psi Phi	Delta Sigma Theta

### Professional Greek Organizations

Delta Sigma Pi	Business Fraternity **
Alpha Phi Omega	Service Fraternity **
Kappa Pi	Art Fraternity **

### Collegiate Interfraternity Music Council (CIMC)

Delta Omicron	Fraternity ** (music background required)
Phi Mu Alpha	Fraternity for Men
Sigma Alpha Iota	Fraternity for Women

\* Colony Status

\*\* Co-Ed

# WARNING!

## UNRECOGNIZED AND NOT AFFILIATED WITH FSU

**THEY ARE NOT GREEK.** They just wear Greek letters. They will not be recognized now or any time soon. Don't let them tell you otherwise.

Most of these organizations were once recognized by the University or affiliated with a national sorority or fraternity. These organizations either chose to participate in serious risk management practices that caused them to lose their national charter or felt that being part of an elite Greek structure was not for them.

Since these groups lack national affiliation, they do not have liability insurance, or oversight policies for risk management, hazing or sexual harassment. Therefore, if one of these chapters would experience a civil lawsuit, a member of that group might be held directly liable by a complainant, exposing himself or herself and his or her family members to unneeded risk.

FSU strongly discourages student participation in these unrecognized groups, as the University does not provide any form of support, oversight and advisement for their members. These unrecognized groups may have a high number of hazing incidents throughout the initiation process.

These groups only exist at FSU; therefore, they are paying dues to a chapter that has no future endeavors.

### WOMEN

Delta Delta (ΔΔ)  
Kappa Gamma Delta (KGD)  
Kappa Beta Sigma (KBΣ)  
Zeta Phi (ZΦ)  
Kappa Tau Epsilon (KTE)

### MEN

Alpha Delta Chi (ADX)  
Kappa Chi Kappa (KXX)  
Delta Phi Omega (ΔΦΩ)  
Alpha Theta Chi (AΘΧ)  
Omega Kappa Zeta (ΩΚΖ)  
Omega Epsilon (ΩΕ)